

Activity Name	Original Duration	Planned Start	Planned Finish	2011				2012				2013				2014				2015				2016	
				Q3	Q4	Q1	Q2	Q3	Q4	Q1	Q2	Q3	Q4	Q1	Q2	Q3	Q4	Q1	Q2	Q3	Q4	Q1	Q2		
HY/2009/15 - CWB TUNNEL (CBTS SECTION)																									
SUBMISSIONS COMPLYING WITH EPs																									
EM&A Manual (rely on the Master EP's submission EP-364/2009/A Condition 2.9)																									
Baseline Monitoring Report (rely on the Master EP's submission EP-364/2009 Condition 3.3)																									
Monthly EM&A (rely on the masters EP's Submission, EP-364/2009/A Condition 3.4)																									
A dedicated website (rely on the master EP's submission, EP-364/2009/A Condition 4.2)																									
Management organization of main construction companies (FEP Condition 2.6)	1d	02-Oct-10	02-Oct-10																						
Work Schedule (FEP Condition 2.7)	1d	27-Oct-10	27-Oct-10																						
Location Plan (FEP Condition 2.8)	1d	27-Oct-10	27-Oct-10																						
Noise Management plan (FEP Condition 2.9)	1d	27-Oct-10	27-Oct-10																						
Landscape plan (FEP condition 2.10)	1d	31-Jan-11	31-Jan-11																						
EAST VENTILATION ADIT																									
CCT @ Portion 1, 2, 4, 6, 22	1315d	27-Sep-10	03-May-14																						
EV Adit @ Portion 4-Advance Works	526d	27-Sep-10	05-Mar-12																						
EV Adit Portion 1, 2, 6, 22	26d	22-Dec-11	16-Jan-12																						
EV Adit-based on Conforming Design	323d	15-Feb-12	02-Jan-13																						
TCBR1E (TS1 Area)																									
Diaphragm Wall Construction (incl. SI, & tests after completion)	107d	26-Apr-11	10-Aug-11																						
Excavation & Lateral Support, ELS	99d	16-Jul-11	22-Oct-11																						
Cut & Cover Tunnel Construction (incl. backfill)	78d	22-Oct-11	07-Jan-12																						
OHVD and Cable Trough (access from Portion 22)	76d	18-Dec-13	03-Mar-14																						
TCBR2 + TCBR3 (TS2 Area)																									
Diaphragm Wall Construction	118d	06-Jul-12	31-Oct-12																						
Excavation & Lateral Support, ELS	248d	06-Jul-12	10-Mar-13																						
Cut & Cover Tunnel Construction	164d	11-Mar-13	21-Aug-13																						
OHVD Cable Trough (Access from Portion 22)	150d	05-Aug-13	01-Jan-14																						
TCBR1W (TS4 Area)																									
Diaphragm Wall Construction	148d	28-Jun-11	22-Nov-11																						
Excavation & Lateral Support, ELS	319d	26-Jun-11	11-May-12																						
Landing Steps - Demolition/Reconstruct as footpath	40d	28-Jun-11	23-Aug-11																						

- ◆ Milestone
- ◆ Milestone
- ▨ Remaining Work
- ▨ Critical Remaining Work
- ▨ Actual Work

1 of 2

China State Construction Engineering (Hong Kong) Ltd.

Contract No. HY/2009/15 - Central Wan Chai By Pass - Tunnel

(CBTS Section)

Prepared by William Caluza			
Date	Revision	Checked	Approved
14-Mar-11	Revision C	ST	KL
	File: GC01a		
	(Layout:HY/2009/15: CWB - Summary)		

中國建築工程(香港)有限公司

CHINA STATE CONSTRUCTION ENGINEERING (HONG KONG) LTD

Activity Name	Original Duration	Planned Start	Planned Finish	2011					2012				2013				2014				2015				2016								
				Q3	Q4	Q1	Q2	Q3	Q4	Q1	Q2	Q3	Q4	Q1	Q2	Q3	Q4	Q1	Q2	Q3	Q4	Q1	Q2	Q3	Q4	Q1							
Rock Excavation	235d	25-Apr-12	15-Dec-12																														
ME4-Diaphragm Wall	114d	10-May-12	19-Oct-12																														
AS Logistics Area for Mined Tunneling Works	174d	01-Jun-12	07-Feb-13																														
ME4-ELS Works	212d	01-Jun-12	02-Apr-13																														
SCL Entrusted Works	291d	18-Jul-12	08-Sep-13																														
Cut & Cover Tunnel Construction (w/o TS4 +)	111d	17-Dec-12	06-Apr-13																														
ME4-RC Structure	146d	28-Jan-13	21-Aug-13																														
OHVD and Cable Trough (Access from TZ5/TPCWAE/TPCWAW)	180d	17-Jun-13	13-Dec-13																														
MINED TUNNEL																																	
CHT Protection Works @ location A, B, C	342d	27-Sep-10	01-Feb-12																														
Tunnel works from West Portal (access from TPCWAE& TZ5	418d	12-Mar-12	30-Oct-13																														
Tunnel Works from East Portal (Access from TS4 Area)	214d	30-Mar-12	01-Feb-13																														
Tunnel OHVD & Cable Trough	384d	02-Dec-13	22-May-15																														
TPCWAE																																	
Drainage Diversion works along Hung Hing Road (Portion 19)	176d	15-Oct-10	24-Jun-11																														
Diaphragm Wall Construction	147d	20-May-11	13-Oct-11																														
Excavation & Lateral Support, ELS	421d	20-May-11	13-Jul-12																														
Rock Excavation	208d	12-Mar-12	03-Oct-12																														
AS Logistics Area for Mined Tunneling works	342d	12-May-12	18-Apr-13																														
Cut & Cover Tunnel Construction	130d	28-Jan-13	06-Jun-13																														
OHVD and Cable Trough (Access from TZ5/TPCWAW)	182d	18-Feb-15	18-Aug-15																														
TPCWAW & PORTION 11																																	
Diaphragm Wall Construction + Portion 11	222d	25-Oct-13	03-Jun-14																														
Excavation & Lateral Support, ELS	478d	25-Oct-13	14-Feb-15																														
Cut & Cover Tunnel Construction	143d	30-Dec-14	21-May-15																														
OHVD and Cable Trough Installation (Access from Portion 11)	235d	22-May-15	11-Jan-16																														

◆ Milestone
◆ Milestone
Remaining Work
Critical Remaining Work
Actual Work

China State Construction Engineering (Hong Kong) Ltd.
Contract No. HY/2009/15 - Central Wan Chai By Pass - Tunnel
(CBTS Section)

Prepared by William Caluza

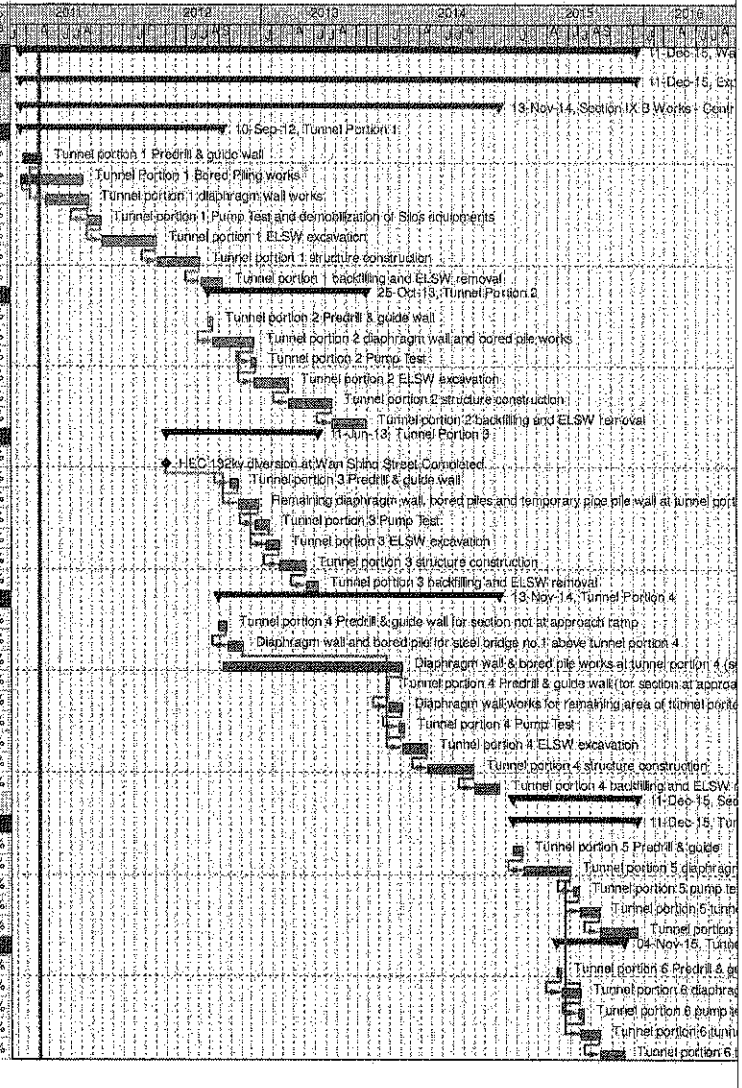
Date	Revision	Checked	Approved
14-Mar-11	Revision C	ST	KL
	File: 0001a		
	(Layout: HY/2009/15: CWB - Summary)		

中國建築工程(香港)有限公司
CHINA STATE CONSTRUCTION ENG. (HONG KONG) LTD.

Wan Chai Development Phase II - Central - Wan Chai
Bypass at Wan Chai East CONTRACT HK/2009/02

CHUN WO - CRGL JV

Activity ID	Activity Name	OD	Start	Finish	% Planned	2011	2012	2013	2014	2015	2016
Wan Chai Development Phase II - Central - Wan Chai Bypass at Wan Chai East											
Expanded and More Detailed Initial Works Programme											
Section IX B Works - Central - Wan Chai Bypass Tunnel Structure from chainage 3400 to eastern tunnel											
Tunnel Portion 1											
S9B-T1-0005	Tunnel portion 1 Predrill & guide wall	10	18-Feb-11	13-Apr-11	40%						
S9B-T1-0007	Tunnel Portion 1 Bored Piling works	105	09-Feb-11	08-Aug-11	0%						
S9B-T1-0010	Tunnel portion 1 diaphragm wall works	105	26-Apr-11	27-Aug-11	0%						
S9B-T1-0015	Tunnel portion 1 Pump Test and demobilization of Slos equipments	35	20-Aug-11	30-Sep-11	0%						
S9B-T1-0020	Tunnel portion 1 ELSW excavation	130	03-Oct-11	07-Mar-12	0%						
S9B-T1-0030	Tunnel portion 1 structure construction	100	09-Mar-12	09-Jul-12	0%						
S9B-T1-0040	Tunnel portion 1 backfilling and ELSW removal	54	10-Jul-12	10-Sep-12	0%						
Tunnel Portion 2											
S9B-T2-0105	Tunnel portion 2 Predrill & guide wall	10	02-Aug-12	13-Aug-12	0%						
S9B-T2-0010	Tunnel portion 2 diaphragm wall and bored pile works	100	14-Aug-12	10-Dec-12	0%						
S9B-T2-0015	Tunnel portion 2 Pump Test	14	03-Dec-12	18-Dec-12	0%						
S9B-T2-0020	Tunnel portion 2 ELSW excavation	80	11-Dec-12	19-Mar-13	0%						
S9B-T2-0030	Tunnel portion 2 structure construction	100	20-Mar-13	22-Jul-13	0%						
S9B-T2-0040	Tunnel portion 2 backfilling and ELSW removal	80	23-Jul-13	25-Oct-13	0%						
Tunnel Portion 3											
S9B-T3-0005	HEC 132kv diversion at Wan Shing Street Completed	0	01-Apr-12*		0%						
S9B-T3-0008	Tunnel portion 3 Predrill & guide wall	20	02-Oct-12	25-Oct-12	0%						
S9B-T3-0010	Remaining diaphragm wall, bored piles and temporary pipe pile wall at tunnel portion 3.	50	25-Oct-12	22-Dec-12	0%						
S9B-T3-0015	Tunnel portion 3 Pump Test	30	15-Dec-12	22-Jan-13	0%						
S9B-T3-0020	Tunnel portion 3 ELSW excavation	30	15-Jan-13	20-Feb-13	0%						
S9B-T3-0030	Tunnel portion 3 structure construction	80	21-Feb-13	08-May-13	0%						
S9B-T3-0040	Tunnel portion 3 backfilling and ELSW removal	30	07-May-13	11-Jun-13	0%						
Tunnel Portion 4											
S9B-T4-0005	Tunnel portion 4 Predrill & guide wall for section not at approach ramp	21	30-Aug-12	22-Sep-12	0%						
S9B-T4-0010	Diaphragm wall and bored pile for steel bridge no.1 above tunnel portion 4	40	24-Sep-12	10-Nov-12	0%						
S9B-T4-0020	Diaphragm wall & bored pile works at tunnel portion 4 (section not at approach ramp)	420	11-Sep-12	05-Feb-14	0%						
S9B-T4-0025	Tunnel portion 4 Predrill & guide wall (for section at approach ramp)	5	23-Dec-13	30-Dec-13	0%						
S9B-T4-0030	Diaphragm wall works for remaining area of tunnel portion 4 (for section at approach ramp)	30	31-Dec-13	06-Feb-14	0%						
S9B-T4-0035	Tunnel portion 4 Pump Test	14	28-Jan-14	14-Feb-14	0%						
S9B-T4-0040	Tunnel portion 4 ELSW excavation	60	07-Feb-14	19-Apr-14	0%						
S9B-T4-0050	Tunnel portion 4 structure construction	110	22-Apr-14	01-Sep-14	0%						
S9B-T4-0060	Tunnel portion 4 backfilling and ELSW removal	60	02-Sep-14	13-Nov-14	0%						
Section X Works - Central - Wan Chai Bypass Tunnel Structure from western tunnel to chainage 3400											
Tunnel Portion 5											
S10-T5-0005	Tunnel portion 5 Predrill & guide	21	23-Dec-14	19-Jan-15	0%						
S10-T5-0010	Tunnel portion 5 diaphragm wall & bored pile works	110	20-Jan-15	04-Jun-15	0%						
S10-T5-0015	Tunnel portion 5 pump test	14	13-Jun-15	30-Jun-15	0%						
S10-T5-0020	Tunnel portion 5 tunnel ELSW excavation	45	04-Jul-15	25-Aug-15	0%						
S10-T5-0030	Tunnel portion 5 tunnel structure construction	90	26-Aug-15	11-Dec-15	0%						
Tunnel Portion 6											
S10-T6-0040	Tunnel portion 6 Predrill & guide	12	24-Apr-15	08-May-15	0%						
S10-T6-0050	Tunnel portion 6 diaphragm wall & bored pile works at Area 10	45	09-May-15	09-Jul-15	0%						
S10-T6-0055	Tunnel portion 6 pump test	14	25-Jun-15	11-Jul-15	0%						
S10-T6-0060	Tunnel portion 6 tunnel ELSW excavation at Area 10	45	04-Jul-15	25-Aug-15	0%						
S10-T6-0070	Tunnel portion 6 tunnel structure construction at Area 10	58	26-Aug-15	04-Nov-15	0%						



後和 - 中國中鐵聯合
 Chun Wo - CRGL JOINT VENTURE

Remaining Level of Effort Milestone
 Actual Level of Effort Summary
 Actual Work
 Remaining Work
 Critical Remaining Work

CEDD CONTRACT NO. HK/2009/02
Wan Chai Development Phase II - Central Wan Chai Bypass at Wan Chai East (Contract 2)
 Revised Programme dated 7 April 2011

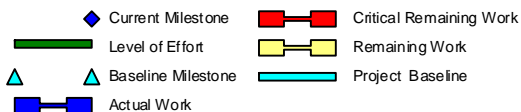
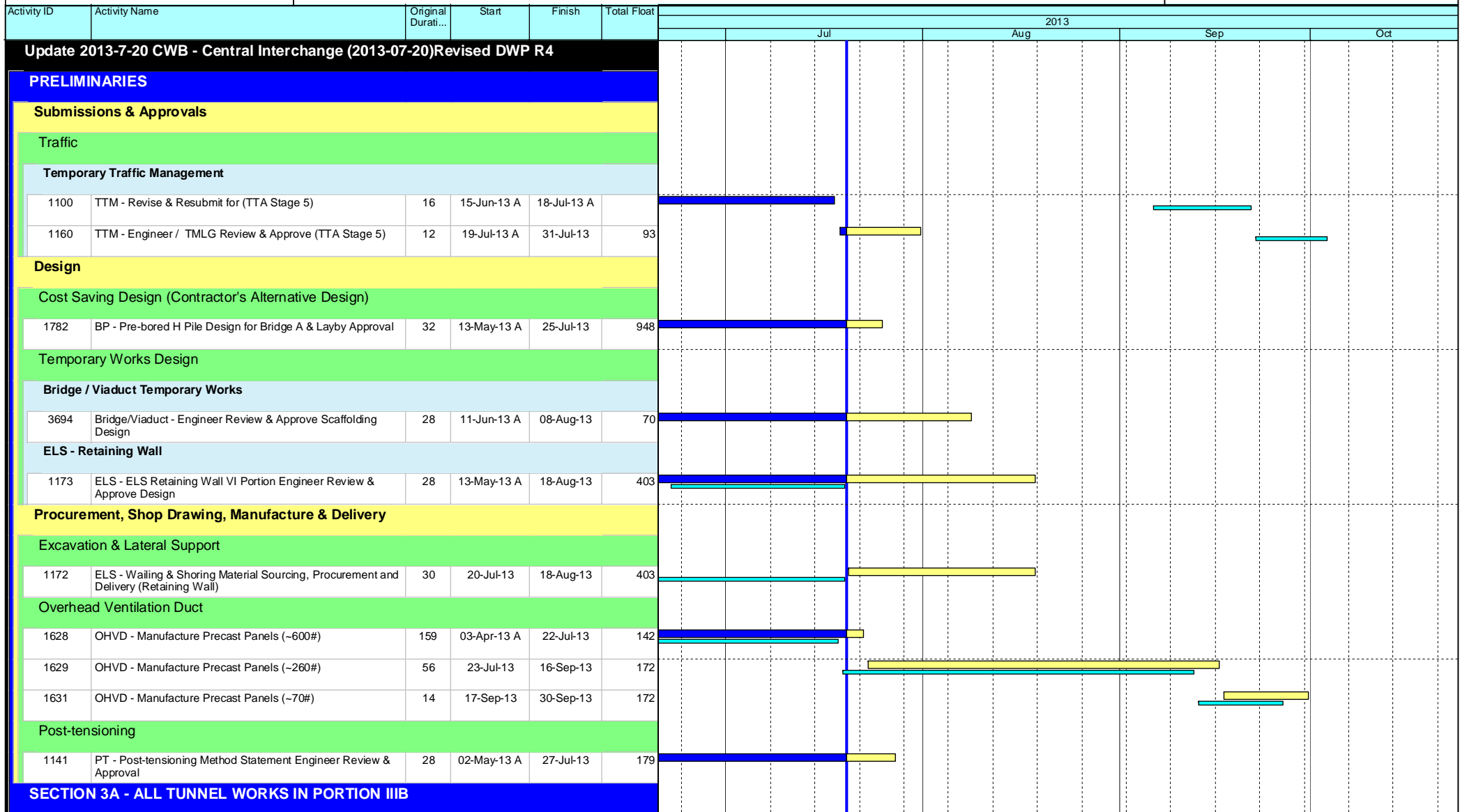
Date	Revision	Checked	Approved
07-Apr-11		KT	KY

Page 10 of 11

Data Date: 20-Jul-13

HY/2009/18 Central - Wan Chai Bypass (Central Interchange)

TASK filters: 3 Months_1, Not HL.



Leighton Contractors (Asia) Limited Programme Update 34 (July 2013) THREE MONTH ROLLING

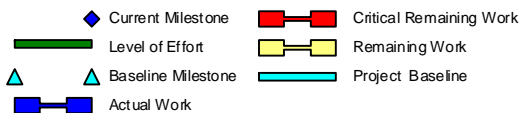
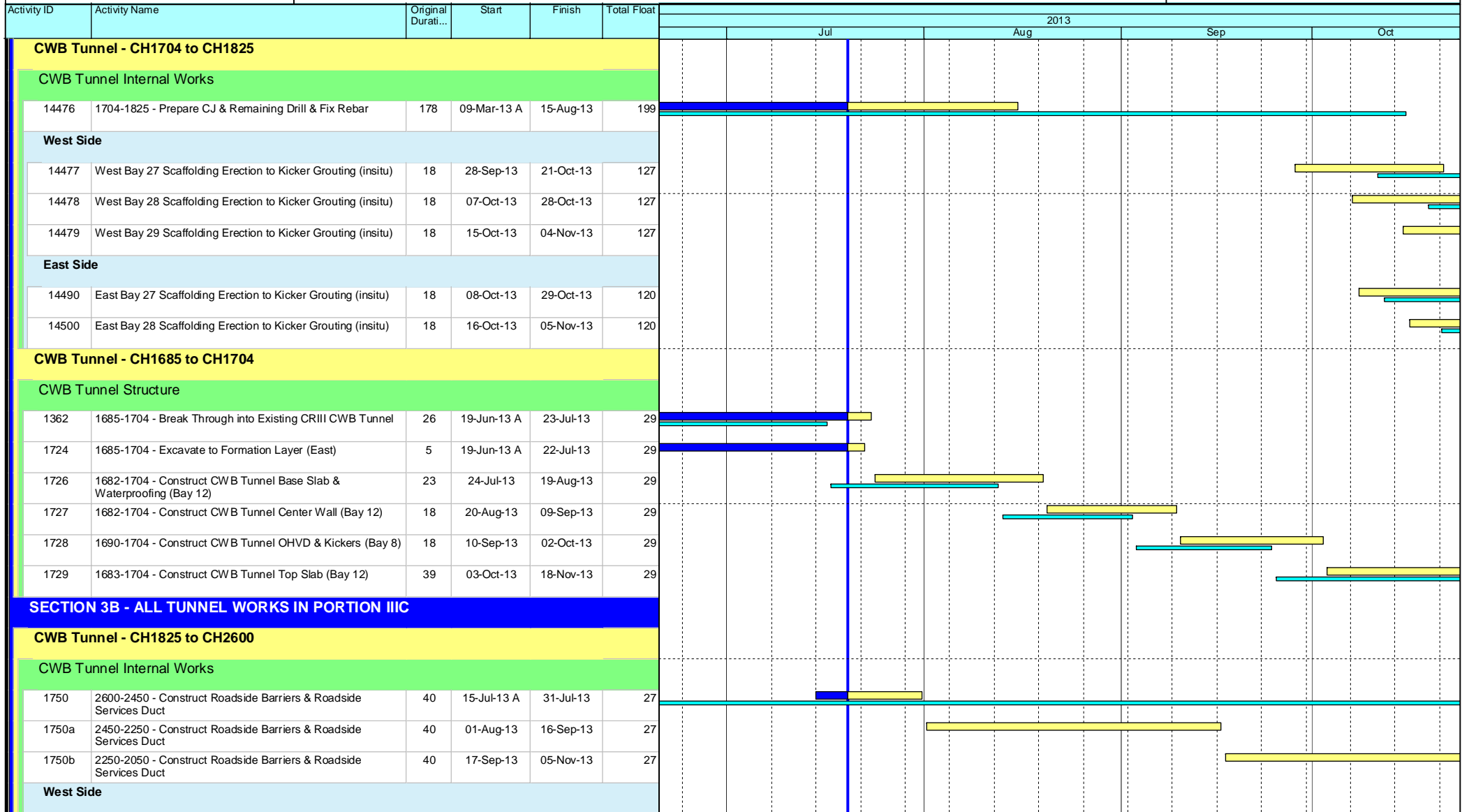
Project ID: U034
Baseline: DCP4-4
Layout: Update Three Month Rolling U034
Page 1 of 9

Date	Revision	Checked	Approv...
21-Jun-13	U033	AT	RW
21-Jul-13	U034	AT	RW

Data Date: 20-Jul-13

HY/2009/18 Central - Wan Chai Bypass (Central Interchange)

TASK filters: 3 Months_1, Not HL.



Leighton Contractors (Asia) Limited Programme Update 34 (July 2013) THREE MONTH ROLLING

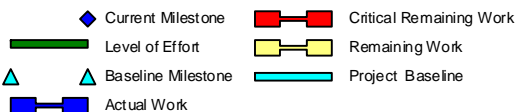
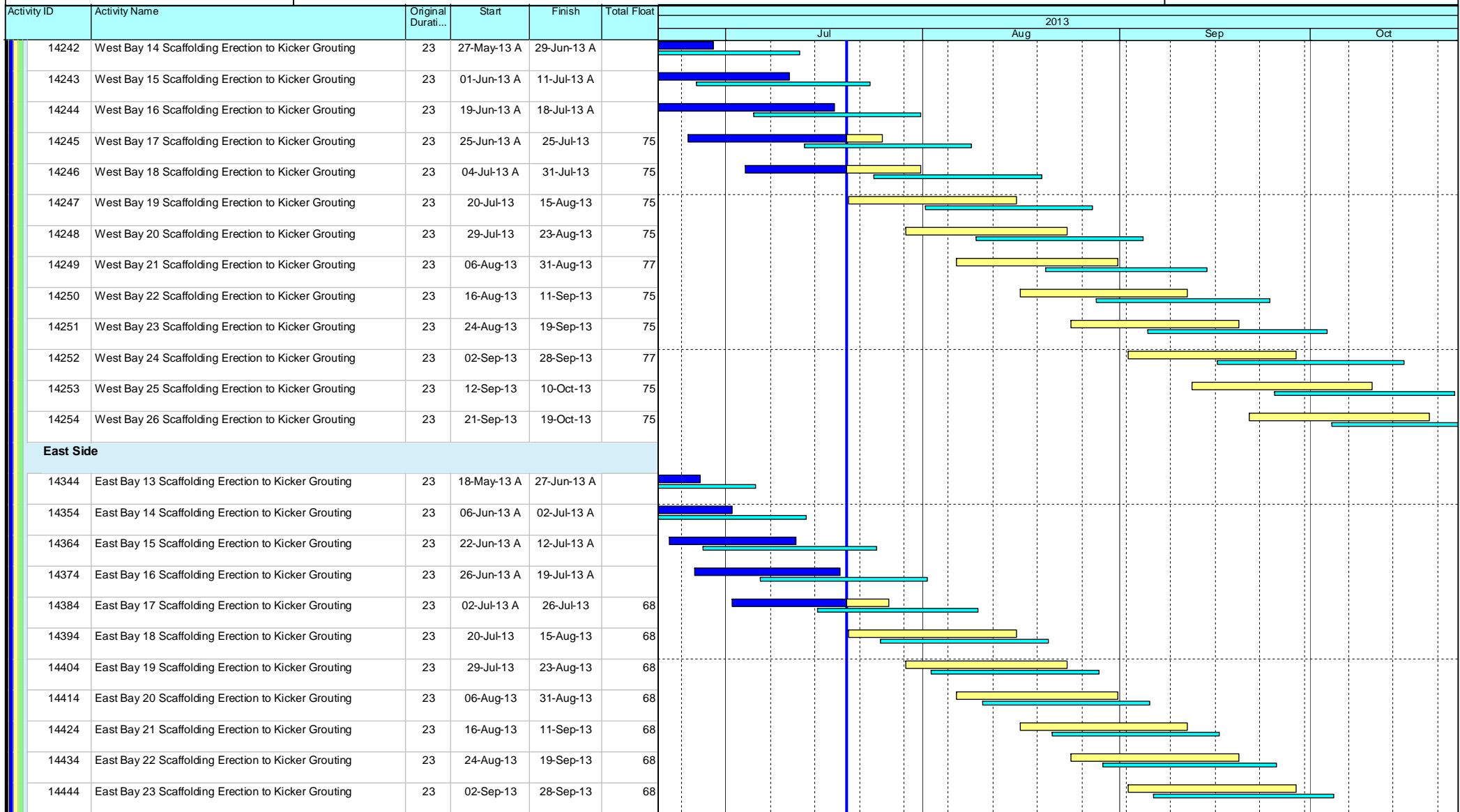
Project ID: U034
Baseline: DCP4-4
Layout: Update Three Month Rolling U034
Page 2 of 9

Date	Revision	Checked	Approv...
21-Jun-13	U033	AT	RW
21-Jul-13	U034	AT	RW

HY/2009/18 Central - Wan Chai Bypass (Central Interchange)



TASK filters: 3 Months_1, Not HL.



Leighton Contractors (Asia) Limited Programme Update 34 (July 2013) THREE MONTH ROLLING

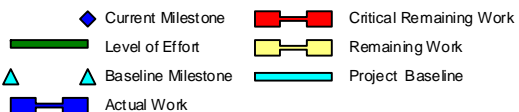
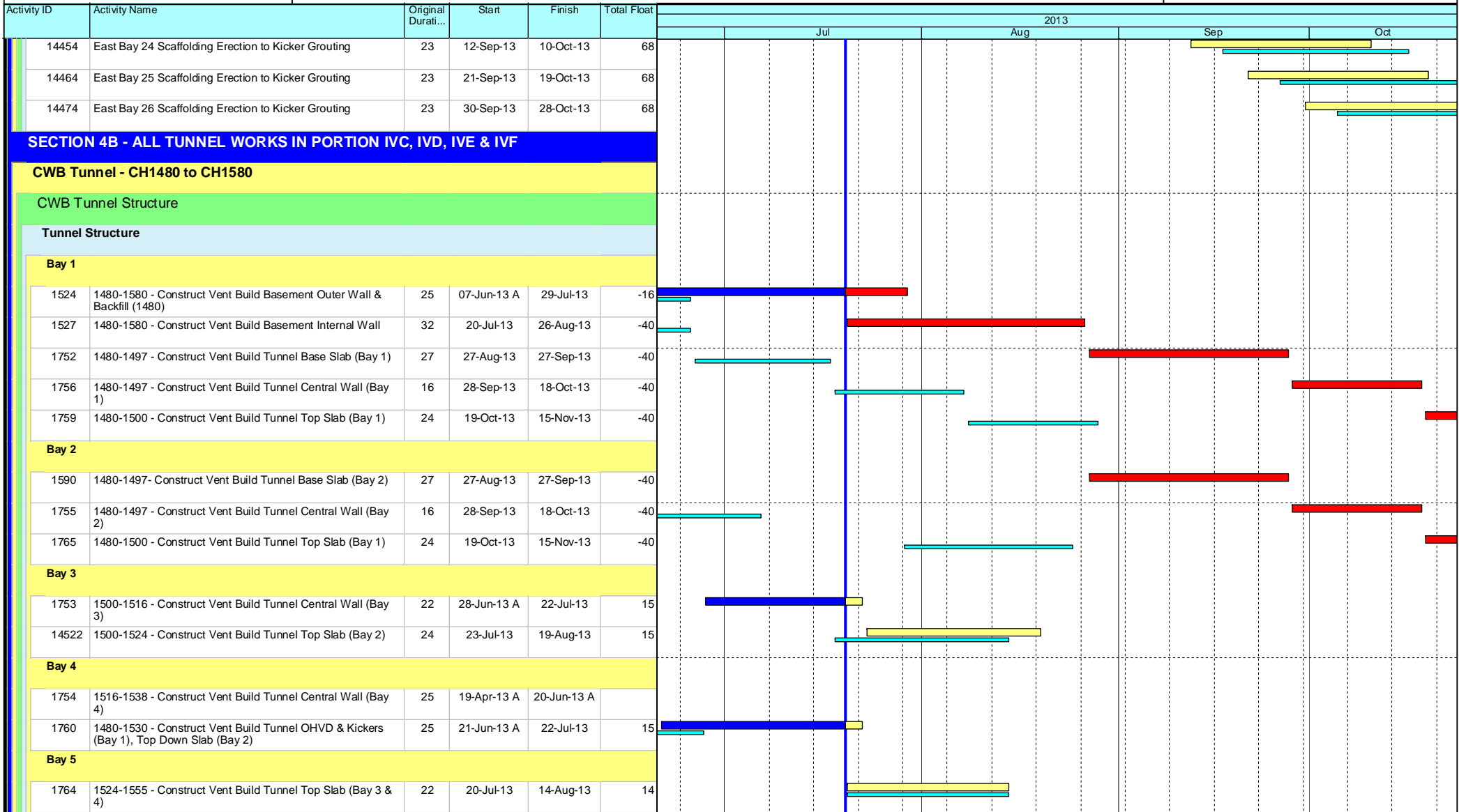
Project ID: U034
Baseline: DCP4-4
Layout: Update Three Month Rolling U034
Page 3 of 9

Date	Revision	Checked	Approv...
21-Jun-13	U033	AT	RW
21-Jul-13	U034	AT	RW

HY/2009/18 Central - Wan Chai Bypass (Central Interchange)



TASK filters: 3 Months_1, Not HL.



Leighton Contractors (Asia) Limited Programme Update 34 (July 2013) THREE MONTH ROLLING

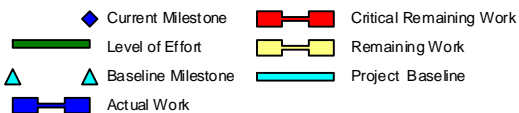
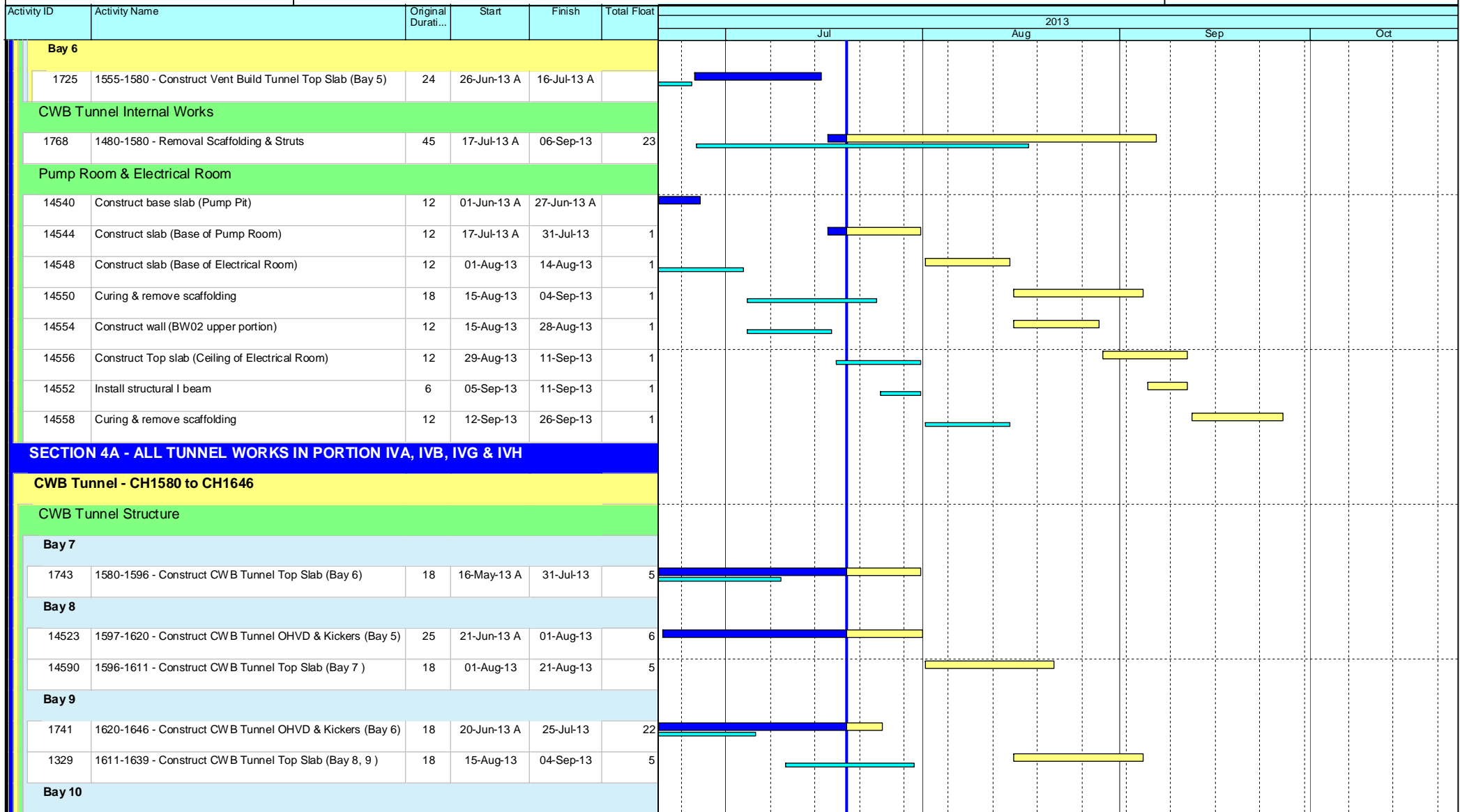
Project ID: U034
 Baseline: DCP4-4
 Layout: Update Three Month Rolling U034
 Page 4 of 9

Date	Revision	Checked	Approv...
21-Jun-13	U033	AT	RW
21-Jul-13	U034	AT	RW

HY/2009/18 Central - Wan Chai Bypass (Central Interchange)



TASK filters: 3 Months_1, Not HL.



Leighton Contractors (Asia) Limited Programme Update 34 (July 2013) THREE MONTH ROLLING

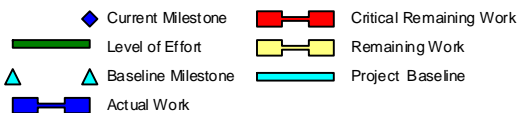
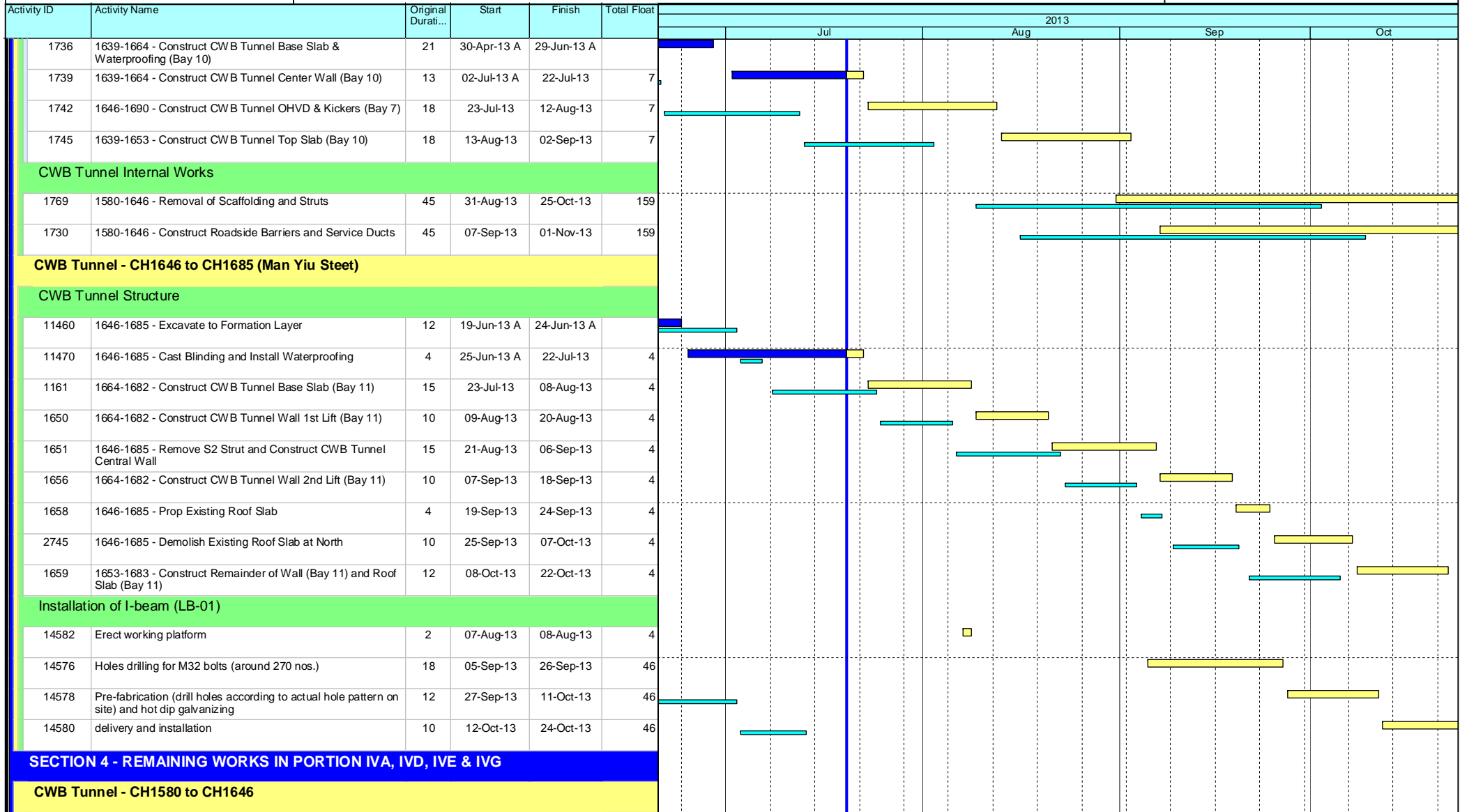
Project ID: U034
 Baseline: DCP4-4
 Layout: Update Three Month Rolling U034
 Page 5 of 9

Date	Revision	Checked	Approv...
21-Jun-13	U033	AT	RW
21-Jul-13	U034	AT	RW

HY/2009/18 Central - Wan Chai Bypass (Central Interchange)



TASK filters: 3 Months_1, Not HL.



Leighton Contractors (Asia) Limited Programme Update 34 (July 2013) THREE MONTH ROLLING

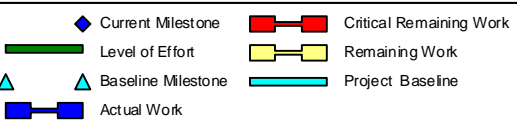
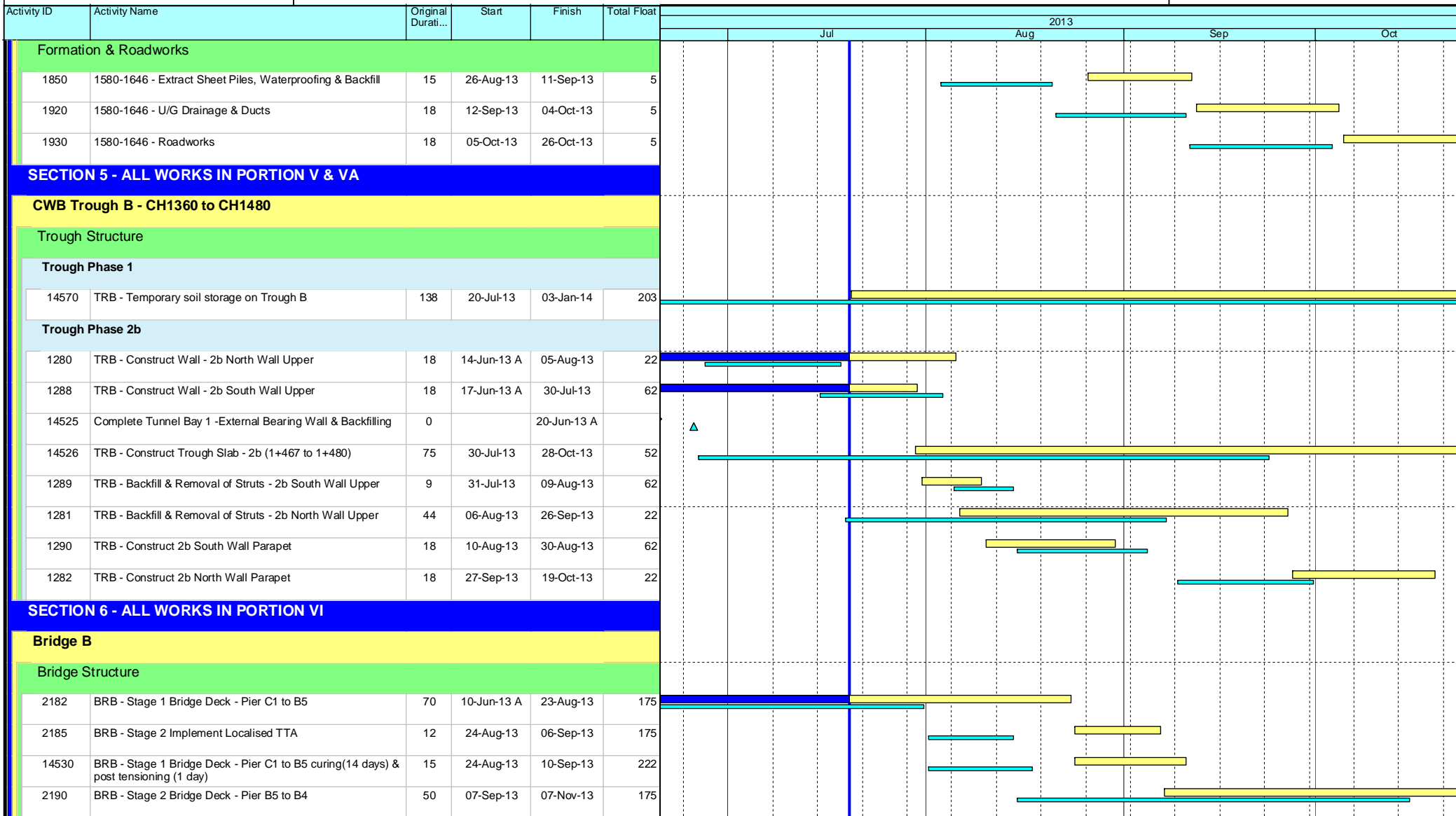
Project ID: U034
 Baseline: DCP4-4
 Layout: Update Three Month Rolling U034
 Page 6 of 9

Date	Revision	Checked	Approv...
21-Jun-13	U033	AT	RW
21-Jul-13	U034	AT	RW

HY/2009/18 Central - Wan Chai Bypass (Central Interchange)



TASK filters: 3 Months_1, Not HL.



Leighton Contractors (Asia) Limited Programme Update 34 (July 2013) THREE MONTH ROLLING

Project ID: U034
Baseline: DCP4-4
Layout: Update Three Month Rolling U034
Page 7 of 9

Date	Revision	Checked	Approv...
21-Jun-13	U033	AT	RW
21-Jul-13	U034	AT	RW

HY/2009/18 Central - Wan Chai Bypass (Central Interchange)



TASK filters: 3 Months_1, Not HL.

Activity ID	Activity Name	Original Durati...	Start	Finish	Total Float	2013				
						Jul	Aug	Sep	Oct	
General Surface Works										
Formation & Roadworks - Man Kwong Street West Bound										
1783	MKSVIWB - Implement Localise TTA (Ch 100 - 200)	0	11-Oct-13		516					
1784	MKSVIWB - U/G Drainage (340 - 340A)	102	11-Oct-13	19-Feb-14	516					
Retaining Wall G (to be deleted)										
2810	RWG - Divert Existing Utilities	43	20-May-13 A	08-Aug-13	321					
2815	RWG - Install Sheet Piles	25	09-Aug-13	06-Sep-13	321					
2820	RWG - Excavate & Lateral Support	50	23-Aug-13	23-Oct-13	321					
2830	RWG - Construct Retaining Wall G - Base Structure	96	23-Sep-13	17-Jan-14	321					
1107	RWG - Construct Retaining Wall G - Wall Structure	96	08-Oct-13	07-Feb-14	321					
Bridge A										
Bridge Structure										
2290	BRA - Pier A2 Pile Caps	36	02-Jul-13 A	09-Aug-13	74					
2340	BRA - Pier A1 Pile Caps	25	05-Aug-13	02-Sep-13	74					
1619	BRA - Backfill Pile Cap A2	6	10-Aug-13	16-Aug-13	114					
2356	BRA - Abutment A Pile Cap	25	21-Aug-13	18-Sep-13	74					
1621	BRA - Backfill Pile Cap A1	6	03-Sep-13	09-Sep-13	94					
2350	BRA - Pier A1 Columns & Crosshead	36	10-Sep-13	24-Oct-13	94					
1622	BRA - Backfill Pile Cap Abutment A	6	19-Sep-13	26-Sep-13	74					
2358	BRA - Abutment A	35	27-Sep-13	08-Nov-13	74					
Elevated Layby at Rumsey Street Flyover East Bound										
Preliminaries										
1630	RSFLB - Divert Any Utilities	26	03-Jun-13 A	02-Aug-13	753					
Bridge Structure										
2720	RSFLB - Pier E1/E2 Prebored H-Piles (2 nos.)	21	03-Aug-13	27-Aug-13	753					

- ◆ Current Milestone
- Critical Remaining Work
- ▬ Level of Effort
- ▬ Remaining Work
- ▲ Baseline Milestone
- ▬ Project Baseline
- ▬ Actual Work

Leighton Contractors (Asia) Limited Programme Update 34 (July 2013) THREE MONTH ROLLING

Project ID: U034
 Baseline: DCP4-4
 Layout: Update Three Month Rolling U034
 Page 8 of 9

Date	Revision	Checked	Approv...
21-Jun-13	U033	AT	RW
21-Jul-13	U034	AT	RW

Data Date: 20-Jul-13

HY/2009/18 Central - Wan Chai Bypass (Central Interchange)



TASK filters: 3 Months_1, Not HL.

Activity ID	Activity Name	Original Durati...	Start	Finish	Total Float	2013			
						Jul	Aug	Sep	Oct
1101	RSFLB - Loading Test	28	28-Aug-13	30-Sep-13	753				
2730	RSFLB - Pier E1/E2 Pile Caps	25	02-Oct-13	31-Oct-13	753				
Key Dates for Completion of Sections									
Contract Required Completion									
1025	KD8 - Section 4B Complete (DAY-1119)	0		13-Oct-13*	0				

- Current Milestone
- Critical Remaining Work
- Level of Effort
- Remaining Work
- Baseline Milestone
- Project Baseline
- Actual Work

Leighton Contractors (Asia) Limited Programme Update 34 (July 2013) THREE MONTH ROLLING

Project ID: U034
 Baseline: DCP4-4
 Layout: Update Three Month Rolling U034
 Page 9 of 9

Date	Revision	Checked	Approv...
21-Jun-13	U033	AT	RW
21-Jul-13	U034	AT	RW

Activity ID	Activity Name	Rem Dur	Start	Finish	2013																		
					July					August					September					October			
					24	01	08	15	22	29	05	12	19	26	02	09	16	23	30	07	14		
3MRP - Jul 2013 to Oct 2013																							
02 - PRE-CONSTRUCTION WORKS																							
02.2 - Contractor's Submission																							
0220-1360	Tunnel Structures Materials - Submission	0	19-Jul-12 A	25-Jun-13 A	Tunnel Structures Materials - Submission																		
0220-1370	Tunnel Structures Materials - ER Review/Comment	0	14-Jan-13 A	25-Jun-13 A	Tunnel Structures Materials - ER Review/Comment																		
0220-1380	Tunnel Structures Materials - Resubmission	0	28-Jan-13 A	01-Jul-13 A	Tunnel Structures Materials - Resubmission																		
0220-1390	Tunnel Structures Materials - ER Approval	6	15-Mar-13 A	25-Jul-13	Tunnel Structures Materials - ER Approval																		
0220-1400	Tunnel Structures Materials - Procurement & Delivery	18	08-Jul-13 A	12-Aug-13	Tunnel Structures Materials - Procurement & Delivery																		
02.3 - Method Statement / Shop Drawings																							
0230-1700	MS Temporary Bridge TA1 - Submission	0	15-May-13 A	25-Jun-13 A	MS Temporary Bridge TA1 - Submission																		
0230-1710	MS Temporary Bridge TA1 - ER Review & Comment	0	26-Jun-13 A	07-Jul-13 A	MS Temporary Bridge TA1 - ER Review & Comment																		
0230-1720	MS Temporary Bridge TA1 - Resubmission	6	08-Jul-13 A	25-Jul-13	MS Temporary Bridge TA1 - Resubmission																		
0230-1730	MS Temporary Bridge TA1 - ER No Adverse Comment	18	26-Jul-13	12-Aug-13	MS Temporary Bridge TA1 - ER No Adverse Comment																		
0230-1920	MS Marine Temp Pile Removal - Resubmission	6	01-Aug-13	06-Aug-13	MS Marine Temp Pile Removal - Resubmission																		
0230-1930	MS Marine Temp Pile Removal - ER Approval	6	07-Aug-13	12-Aug-13	MS Marine Temp Pile Removal - ER Approval																		
02.4 - Contractor's Design and Build Items																							
0240-1030	Temp Bridge "TA1" Design - Resubmission	0	19-Mar-13 A	25-Jun-13 A	Temp Bridge "TA1" Design - Resubmission																		
0240-1035	Temp Bridge "TA1" Design - ER Approval	12	26-Jun-13 A	31-Jul-13	Temp Bridge "TA1" Design - ER Approval																		
0240-1040	Temp Bridge "TA1" - Fabrication	15	26-Jun-13 A	03-Aug-13	Temp Bridge "TA1" - Fabrication																		
0240-1041	Temp Bridge "TD" Design - Submission	12	01-Mar-13 A	31-Jul-13	Temp Bridge "TD" Design - Submission																		
0240-1042	Temp Bridge "TD" Design - ER review and comment	28	01-Aug-13	28-Aug-13	Temp Bridge "TD" Design - ER review and comment																		
0240-1043	Temp Bridge "TD" Design - Resubmission	36	29-Aug-13	03-Oct-13	Temp Bridge "TD" Design - Resubmission																		
0240-1044	Temp Bridge "TD" Design - ER Approval	28	04-Oct-13	31-Oct-13	Temp Bridge "TD" Design - ER Approval																		
0240-1105	Int. Noise Enclosure Structural Design - Submission	9	20-Mar-13 A	28-Jul-13	Int. Noise Enclosure Structural Design - Submission																		
0240-1110	Int. Noise Enclosure Structural Design - ER Review/Resubmission	48	29-Jul-13	14-Sep-13	Int. Noise Enclosure Structural Design - ER Review/Resubmission																		
0240-1112	Int. Noise Enclosure Structural Design - ER Approval	28	15-Sep-13	12-Oct-13	Int. Noise Enclosure Structural Design - ER Approval																		
0240-1127	Noise Barrier Design Structural Design - ER Review/Resubmission	24	30-May-13 A	12-Aug-13	Noise Barrier Design Structural Design - ER Review/Resubmission																		
0240-1128	Noise Barrier Design Structural Design - ER Approval	28	13-Aug-13	09-Sep-13	Noise Barrier Design Structural Design - ER Approval																		
0240-1129	Noise Barrier Design - Procurement/Fabrication/Delivery	180	10-Sep-13	08-Mar-14	Noise Barrier Design - Procurement/Fabrication/Delivery																		
0240-1150	Perm. Noise Enclosure Structural Design - Submission	9	20-Mar-13 A	28-Jul-13	Perm. Noise Enclosure Structural Design - Submission																		
0240-1160	Perm. Noise Enclosure Structural Design - ER Review/Resubmission	48	29-Jul-13	14-Sep-13	Perm. Noise Enclosure Structural Design - ER Review/Resubmission																		
0240-1161	Perm. Noise Enclosure Structural Design - ER Approval	28	15-Sep-13	12-Oct-13	Perm. Noise Enclosure Structural Design - ER Approval																		
02.5 - Bridge Segment/Beam Off-site Precasting																							
0250-1700.08	Bridge Precast Beam Casting Bridge F4 Beam 4-1	0	17-Jun-13 A	01-Jul-13 A	Bridge Precast Beam Casting Bridge F4 Beam 4-1																		
0250-1700.09	Bridge Precast Beam Casting Bridge F4 Beam 5-1	6	02-Jul-13 A	25-Jul-13	Bridge Precast Beam Casting Bridge F4 Beam 5-1																		
0250-1700.10	Bridge Precast Beam Casting Bridge F4 Beam 6-1	9	08-Jul-13 A	03-Aug-13	Bridge Precast Beam Casting Bridge F4 Beam 6-1																		
0250-1700.11	Bridge Precast Beam Casting Bridge E Beam E1D1-A	9	02-Jul-13 A	28-Jul-13	Bridge Precast Beam Casting Bridge E Beam E1D1-A																		
0250-1700.21	Bridge Precast Beam Casting Bridge E Beam E1D-B	14	29-Jul-13	11-Aug-13	Bridge Precast Beam Casting Bridge E Beam E1D-B																		
0250-1700.31	Bridge Precast Beam Casting Bridge E Beam E1D-C	14	05-Aug-13	18-Aug-13	Bridge Precast Beam Casting Bridge E Beam E1D-C																		
0250-1700.41	Bridge Precast Beam Casting Bridge E Beam E2E1-A	14	12-Aug-13	25-Aug-13	Bridge Precast Beam Casting Bridge E Beam E2E1-A																		
0250-1700.51	Bridge Precast Beam Casting Bridge E Beam E2E1-B	14	19-Aug-13	01-Sep-13	Bridge Precast Beam Casting Bridge E Beam E2E1-B																		
0250-1700.61	Bridge Precast Beam Casting Bridge E Beam E2E1-C	14	26-Aug-13	08-Sep-13	Bridge Precast Beam Casting Bridge E Beam E2E1-C																		
0250-1600.11	Bridge F2 Pier F04 Precasting Segment (1-13) - Mould S1	0	27-May-13 A	06-Jul-13 A	Bridge F2 Pier F04 Precasting Segment (1-13) - Mould S1																		
0250-1600.12	Bridge D2 Pier D07 Precasting Segment (1-17) - Mould S1	34	07-Jul-13 A	22-Aug-13	Bridge D2 Pier D07 Precasting Segment (1-17) - Mould S1																		

- Remaining Level of Effort
- Actual Level of Effort
- Actual Work
- Remaining Work
- Critical Remaining Work
- ◆ Milestone

Contract HY/2009/19

Three Month Rolling Programme (20 Jul 2013 to 19 Oct 2013)

3MRP

3MRP - Jul 2013 to Oct 2013

Page 1 of 7

Activity ID	Activity Name	Rem Dur	Start	Finish	2013																	
					July					August				September				October				
					24	01	08	15	22	29	05	12	19	26	02	09	16	23	30	07	14	
0250-1600.13	Bridge D2 Pier D06 Precasting Segment (1-17) - Mould S1	42	22-Aug-13	03-Oct-13																		
0250-1600.14	Bridge D2 Pier D05 Precasting Segment (1-17) - Mould S1	42	03-Oct-13	14-Nov-13																		
0250-1650.04	Bridge F1 Pier F03 Precasting Segment (1-6) - Mould S2	18	10-Jun-13 A	06-Aug-13																		
0250-1650.05	Bridge F2 Pier F03 Precasting Segment (1-5) - Mould S2	17	04-Jul-13 A	23-Aug-13																		
0250-1650.16	Bridge F2 Pier F05 Precasting Segment (1-6) - Mould S2	21	23-Aug-13	13-Sep-13																		
0250-1650.17	Bridge D2 Pier D08 Precasting Segment (1-8) - Mould S1	24	13-Sep-13	07-Oct-13																		
0250-1650.18	Bridge D2 Pier D04 Precasting Segment (1-8) - Mould S2	24	07-Oct-13	31-Oct-13																		
0250-1655.04	Bridge F3 - F06 Segment - Remaining (10 nos) - Mould T	5	21-Jun-13 A	24-Jul-13																		
0250-1655.014	Bridge F3 - F07 Segment - Pier Segment +2 (3 nos) - Mould T	10	25-Jul-13	03-Aug-13																		
0250-1655.024	Bridge F3 - F07 Segment - Remaining (10 nos) - Mould T	30	04-Aug-13	02-Sep-13																		
0250-1655.02	Bridge F3 - F05 Segment - Remaining (4 nos) - Mould T	12	03-Sep-13	14-Sep-13																		
0250-1655.01	Bridge F3 - F05 Segment - Pier Segment +1 (2 nos) - Mould T	9	15-Sep-13	23-Sep-13																		
0250-1830	Segment Storage - Portal Gantry Foundation + Rail Stage 3	12	16-Sep-13*	30-Sep-13																		
03 - PRELIMINARY WORKS																						
03.3 - Interface Works																						
0330-1110	Submit/Agree FEHD/ER Relocation Sequence & Programme	6	19-Mar-13 A	26-Jul-13																		
0330-1200	Agreement of HGHK Interim Temp Carpark	34	20-Jun-13 A	28-Aug-13																		
0330-1300	Erect Interim Temp Carpark for HGHK	18	13-Sep-13	07-Oct-13																		
05 - SECTION 2 & 2A OF THE WORKS																						
05.1 - Cut & Cover Tunnel Ch 4855-4932 (APS Footprint)																						
05.1.1 - D-Wall Construction																						
0511-1088	Dismantle Bentonite Plant - EVB Area	12	13-May-13 A	02-Aug-13																		
0511-1090	Install Dewatering Well - EVB Area (18 nos.)	24	27-Jun-13 A	16-Aug-13																		
0511-1092	Install Recharging Well - EVB Area (6 nos.)	24	03-Jul-13 A	16-Aug-13																		
0511-1091	Install Observation Well - EVB Area (14 nos.)	28	30-Jul-13	30-Aug-13																		
0511-1095	Install King Post - EVB Area (20 nos.)	36	17-Aug-13	28-Sep-13																		
0511-1100	Pump Test Ch 4855-4932	15	31-Aug-13	17-Sep-13																		
05.1.2 - ELS																						
0512-1101	Advance Excav EVB Area 1st Layer + Support	15	30-Sep-13	18-Oct-13																		
05.2 - Cut & Cover Tunnel Ch 4932-5149																						
05.2.1 - D-Wall Construction																						
0521-1879	Remove Existing Box Culvert at D-wall Area + Backfill	5	02-Jul-13 A	25-Jul-13																		
0521-1880	D-wall N71-N73 Grouting for Existing Seawall Rubble Mound	12	26-Jul-13	08-Aug-13																		
0521-2140	D-wall S78-S80 + BC53 Guide Wall	9	26-Jul-13	05-Aug-13																		
0521-1890	D-wall N71-N73 Guide Wall	12	02-Aug-13	15-Aug-13																		
0521-2145.10	D-wall Panel S78	12	06-Aug-13	19-Aug-13																		
0521-1900.10	D-wall Panel N73	14	16-Aug-13	31-Aug-13																		
0521-2145.15	D-wall Panel S79	12	20-Aug-13	02-Sep-13																		
0521-1900.20	D-wall Panel N72	14	02-Sep-13	17-Sep-13																		
0521-1900.15	D-wall Panel N71	14	18-Sep-13	05-Oct-13																		
0521-1900.30	D-wall Panel N74	14	18-Sep-13	05-Oct-13																		
0521-2165	Install Dewatering Well - Ch 4932-5149 (10 nos.)	18	26-Sep-13	18-Oct-13																		
0521-2166	Install Observation Well - Ch 4932-5149 (6 nos.)	18	26-Sep-13	18-Oct-13																		
0521-2167	Install Recharging Well - Ch 4932-5149 (2 nos.)	12	04-Oct-13	18-Oct-13																		

- Remaining Level of Effort
- Actual Level of Effort
- Actual Work
- Remaining Work
- Critical Remaining Work
- ◆ Milestone

Contract HY/2009/19

Three Month Rolling Programme (20 Jul 2013 to 19 Oct 2013)

3MRP

3MRP - Jul 2013 to Oct 2013

Activity ID	Activity Name	Rem Dur	Start	Finish	2013																		
					July					August					September					October			
					24	01	08	15	22	29	05	12	19	26	02	09	16	23	30	07	14		
1011-2200	F4 Crosshead Construction	16	18-Jun-13 A	07-Aug-13	F4 Crosshead Construction																		
1011-2205	Bearing intallation Pier F4	12	15-Aug-13	28-Aug-13	Bearing intallation Pier F4																		
1011-2230	F5 Crosshead Construction	14	13-May-13 A	05-Aug-13	F5 Crosshead Construction																		
1011-2235	Bearing intallation Pier F5	12	13-Aug-13	26-Aug-13	Bearing intallation Pier F5																		
1011-2245	F6 Pile Cap Construction	5	13-May-13 A	25-Jul-13	F6 Pile Cap Construction																		
1011-2250	F6 Pier/Column Construction	12	26-Jul-13	08-Aug-13	F6 Pier/Column Construction																		
1011-2260	F6 Crosshead Construction	18	09-Aug-13	29-Aug-13	F6 Crosshead Construction																		
1011-2261	Bearing intallation Pier F6	12	06-Sep-13	19-Sep-13	Bearing intallation Pier F6																		
1011-2275	F7 Pile Cap Construction	7	20-Jun-13 A	27-Jul-13	F7 Pile Cap Construction																		
1011-2280	F7 Pier/Column Construction	12	29-Jul-13	10-Aug-13	F7 Pier/Column Construction																		
1011-2290	F7 Crosshead Construction	18	30-Aug-13	19-Sep-13	F7 Crosshead Construction																		
1011-2291	Bearing intallation Pier F7	12	28-Sep-13	12-Oct-13	Bearing intallation Pier F7																		
1011-2300	F8 Pile Cap Shutter Cofferdam	14	10-Jun-13 A	05-Aug-13	F8 Pile Cap Shutter Cofferdam																		
1011-2305	F8 Pile Cap Construction	18	06-Aug-13	26-Aug-13	F8 Pile Cap Construction																		
1011-2310	F8 Pier/Column Construction	12	27-Aug-13	09-Sep-13	F8 Pier/Column Construction																		
1011-2320	F8 Crosshead Construction	18	10-Sep-13	02-Oct-13	F8 Crosshead Construction																		
1011-2345	Bearing intallation Pier F8	12	10-Oct-13	24-Oct-13	Bearing intallation Pier F8																		
1011-2380	F9 Pile Cap Shutter Cofferdam	18	30-Jul-13	19-Aug-13	F9 Pile Cap Shutter Cofferdam																		
1011-3115	F9 Pile Cap Construction	18	20-Aug-13	09-Sep-13	F9 Pile Cap Construction																		
1011-2390	F9 Pier/Column Construction	12	10-Sep-13	24-Sep-13	F9 Pier/Column Construction																		
1011-2410	F10 Pile Cap Shutter Cofferdam	18	13-Aug-13	02-Sep-13	F10 Pile Cap Shutter Cofferdam																		
1011-3125	F10 Pile Cap Construction	18	03-Sep-13	24-Sep-13	F10 Pile Cap Construction																		
1011-2420	F10 Pier/Column Construction	12	25-Sep-13	09-Oct-13	F10 Pier/Column Construction																		
1011-2350	F11 Pile Cap Shutter Cofferdam	18	27-Aug-13	16-Sep-13	F11 Pile Cap Shutter Cofferdam																		
1011-3135	F11 Pile Cap Construction	18	17-Sep-13	09-Oct-13	F11 Pile Cap Construction																		
1011-2360	F11 Pier/Column Construction	12	10-Oct-13	24-Oct-13	F11 Pier/Column Construction																		
1011-2075	F12 Dismantle Piling Platform	7	12-Aug-13*	19-Aug-13	F12 Dismantle Piling Platform																		
1011-2440	F12 Pile Cap Shutter Cofferdam	18	10-Sep-13*	02-Oct-13	F12 Pile Cap Shutter Cofferdam																		
1011-3145	F12 Pile Cap Construction	18	03-Oct-13*	24-Oct-13	F12 Pile Cap Construction																		
1011-2080	F13 Dismantle Piling Platform	7	20-Aug-13	27-Aug-13	F13 Dismantle Piling Platform																		
1011-2470	F13 Pile Cap Shutter Cofferdam	18	25-Sep-13	17-Oct-13	F13 Pile Cap Shutter Cofferdam																		
1011-2085	F14 Dismantle Piling Platform	7	28-Aug-13	04-Sep-13	F14 Dismantle Piling Platform																		
1011-2500	F14 Pile Cap Shutter Cofferdam	18	10-Oct-13*	31-Oct-13	F14 Pile Cap Shutter Cofferdam																		
1011-2295	Temp Pile Trial Extraction	3	29-Jul-13*	31-Jul-13	Temp Pile Trial Extraction																		
1011-2975	F3 Extract Temp Pile	9	02-Sep-13	11-Sep-13	F3 Extract Temp Pile																		
1011-2985	F4 Extract Temp Pile	9	12-Sep-13	23-Sep-13	F4 Extract Temp Pile																		
1011-3105	F5 Extract Temp Pile	7	24-Sep-13	02-Oct-13	F5 Extract Temp Pile																		
1011-2265	F6 Extract Temp Pile	7	03-Oct-13	10-Oct-13	F6 Extract Temp Pile																		
1011-2025	F7 Extract Temp Pile	7	11-Oct-13	19-Oct-13	F7 Extract Temp Pile																		
1011-3045	Approve MS for Construction of Temp Parapet at IEC Bridge	0	15-May-13 A	04-Jul-13 A	Approve MS for Construction of Temp Parapet at IEC Bridge																		
1011-3075	Existing IEC Bridge F8-F14 - Remove Existing Road Lighting	28	20-Jul-13	16-Aug-13	Existing IEC Bridge F8-F14 - Remove Existing Road Lighting																		
1011-3085	Existing IEC Bridge F8-F14 - Temporary Parapet Erection	28	05-Jul-13 A	16-Aug-13	Existing IEC Bridge F8-F14 - Temporary Parapet Erection																		
1011-3095	Existing IEC Bridge F8-F14 - Demolish Existing Parapet	35	17-Aug-13	20-Sep-13	Existing IEC Bridge F8-F14 - Demolish Existing Parapet																		

Pier F01 to F02

- Remaining Level of Effort
- Actual Level of Effort
- Actual Work
- Remaining Work
- Critical Remaining Work
- ◆ Milestone

Contract HY/2009/19

Three Month Rolling Programme (20 Jul 2013 to 19 Oct 2013)

3MRP

3MRP - Jul 2013 to Oct 2013

Page 5 of 7

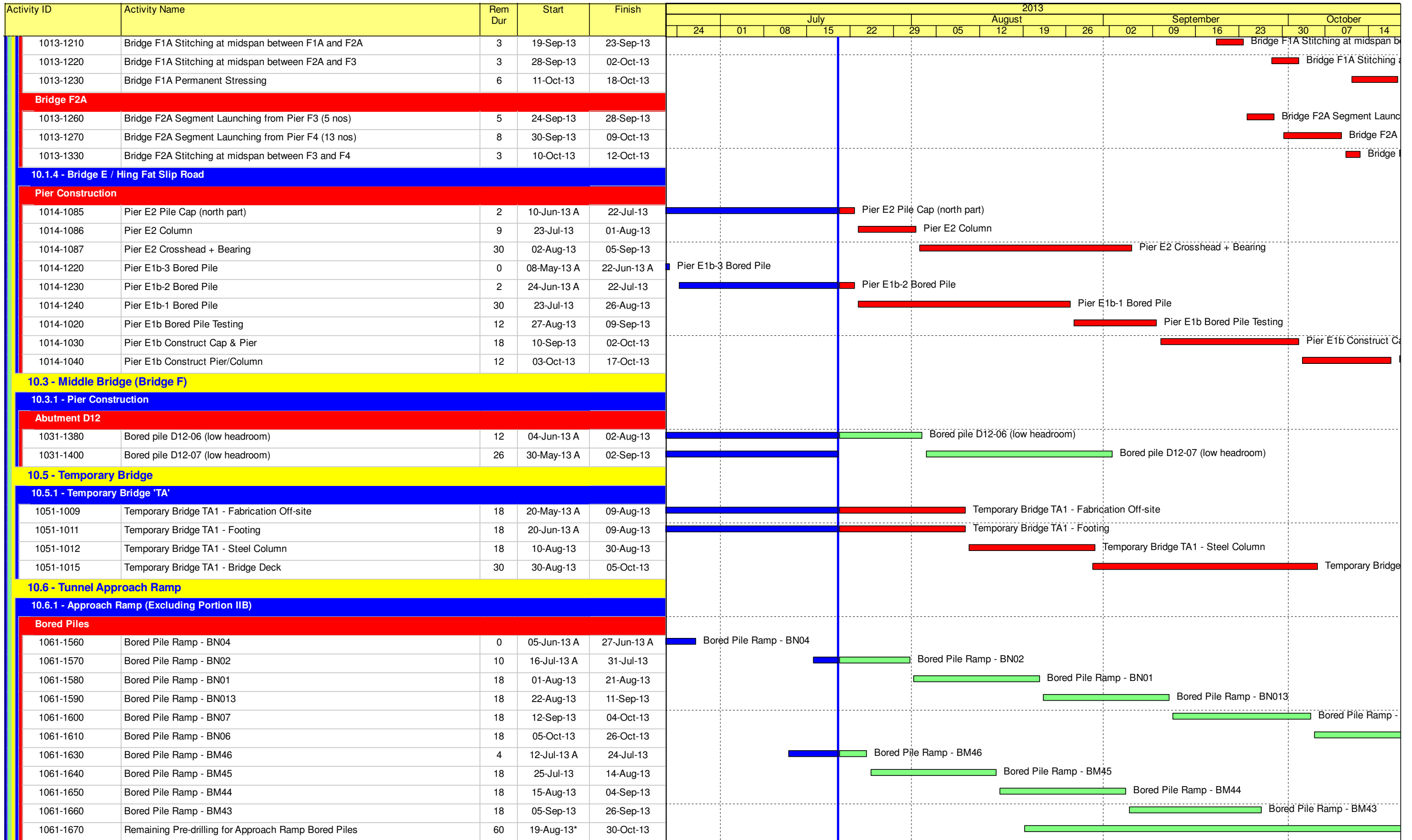
Activity ID	Activity Name	Rem Dur	Start	Finish	2013																		
					July					August				September				October					
					24	01	08	15	22	29	05	12	19	26	02	09	16	23	30	07	14		
1011-2890	F1B Pile Cap Shutter Cofferdam	18	15-Aug-13	04-Sep-13																			
1011-2895	F1B Pile Cap Construction	18	05-Sep-13	26-Sep-13																			
1011-2900	F1B Pier/Column Construction	12	27-Sep-13	11-Oct-13																			
1011-2995	Bridge F1A Bearing Installation	0	20-Jun-13 A	04-Jul-13 A																			
1011-2835	F2B Pile Cap Construction	0	11-Mar-13 A	03-Jul-13 A																			
1011-2840	F2B Pier/Column Construction	0	04-Jul-13 A	17-Jul-13 A																			
1011-2850	F2B Crosshead Construction	18	20-Jul-13	09-Aug-13																			
1011-2963	Extract Temp Pile F1	12	01-Aug-13	14-Aug-13																			
1011-2965	Extract Temp Pile F2	15	15-Aug-13	31-Aug-13																			
10.1.2 - Land Pier Construction																							
Pier D05 to D07																							
1012-1290.20	Pier D05 Bored Pile D05-1	0	29-Jun-13 A	13-Jul-13 A																			
1012-1300	Pier D05 Bored Piles Testing	18	30-Jul-13	19-Aug-13																			
1012-1495	Pier D05 Drive Sheetpiles	12	14-Sep-13	28-Sep-13																			
1012-1500	Pier D05 Excavation and Lateral Support	12	30-Sep-13	15-Oct-13																			
1012-1590	Pier D05 - Modify Tunnel Lateral Support	9	04-Oct-13	15-Oct-13																			
1012-1335	Pier D07 Drive Sheet Pile + ELS	0	20-May-13 A	06-Jul-13 A																			
1012-1340	Pier D07 Construct Pile Cap	6	08-Jul-13 A	26-Jul-13																			
1012-1350	Pier D07 Construct Pier/Column	12	27-Jul-13	09-Aug-13																			
1012-1360	Pier D07 Construct Crosshead	18	10-Aug-13	30-Aug-13																			
1012-1305	Pier D06 Drive Sheet Pile + ELS	9	08-Jul-13 A	30-Jul-13																			
1012-1310	Pier D06 Construct Pile Cap	12	31-Jul-13*	13-Aug-13																			
1012-1320	Pier D06 Construct Pier/Column	12	14-Aug-13	27-Aug-13																			
1012-1330	Pier D06 Construct Crosshead	18	28-Aug-13	17-Sep-13																			
1012-1370	Bearing installation (E1b, D6 & D7) at VIIB	18	18-Sep-13	10-Oct-13																			
10.1.3 - E/B Bridge Construction																							
Bridge D3																							
1013-1050	Bridge D3 Segment Launching from Pier D09 (16 nos)	0	06-Jun-13 A	27-Jun-13 A																			
1013-1055	Bridge D3 Segment Launching from Pier D08 (7 nos)	0	02-Jul-13 A	13-Jul-13 A																			
1013-1090	Bridge D3 Stitching at midspan between D8 and D9	5	13-Jul-13 A	25-Jul-13																			
1013-1060	Bridge D3 Segment Launching from Pier D10 (17 nos)	6	29-Jul-13	03-Aug-13																			
1013-1100	Bridge D3 Stitching at midspan between D9 and D10	3	05-Aug-13	07-Aug-13																			
1013-1070	Bridge D3 Segment Launching from Pier D11 (17 nos)	6	08-Aug-13	14-Aug-13																			
1013-1110	Bridge D3 Stitching at midspan between D10 and D11	3	15-Aug-13	17-Aug-13																			
1013-1080	Bridge D3 Segment Launching from Abutment D12 (4 nos)	3	19-Aug-13	21-Aug-13																			
1013-1120	Bridge D3 Stitching at midspan between D11 and D12	3	22-Aug-13	24-Aug-13																			
1013-1130	Bridge D3 Permanent Stressing	6	26-Aug-13	31-Aug-13																			
Bridge F1A																							
1013-1155	Bridge F1A Pier Segments at D12+F1A+F2A	3	02-Sep-13	04-Sep-13																			
1013-1170	Bridge F1A Segment Launching from Pier F1A (12 nos)	5	05-Sep-13	10-Sep-13																			
1013-1180	Bridge F1A Segment Launching from Pier F2A (11 nos)	7	11-Sep-13	18-Sep-13																			
1013-1160	Bridge F1A Segment Launching from Abutment D12 (4 nos)	2	12-Sep-13	13-Sep-13																			
1013-1200	Bridge F1A Stitching at midspan between D12 and F1A	3	14-Sep-13	17-Sep-13																			
1013-1190	Bridge F1A Segment Launching from Pier F3 (6 nos)	7	19-Sep-13	27-Sep-13																			

- Remaining Level of Effort
- Actual Level of Effort
- Actual Work
- Remaining Work
- Critical Remaining Work
- Milestone

Contract HY/2009/19

Three Month Rolling Programme (20 Jul 2013 to 19 Oct 2013)

3MRP
 3MRP - Jul 2013 to Oct 2013
 Page 6 of 7



- Remaining Level of Effort
- Actual Level of Effort
- Actual Work
- Remaining Work
- Critical Remaining Work
- ◆ Milestone

Contract HY/2009/19

Three Month Rolling Programme (20 Jul 2013 to 19 Oct 2013)

3MRP

3MRP - Jul 2013 to Oct 2013



Activity ID	Show / Not Show	Activity Name	Orig Dur	Early Start	Early Finish	Total Float	Calendar	2013							2014							2015							2016							2017							2018																													
								D	J	F	M	A	M	J	Jul	A	S	O	N	D	J	F	M	A	M	J	Jul	A	S	O	N	D	J	F	M	A	M	J	Jul	A	S	O	N	D	J	F	M	A	M	J	Jul	A	S	O	N	D	J	F	M	A	M	J	Jul	A	S	O	N	D	J	F	M	A
Dredging - Zone B																																																																								
A31040		Zone B - dredging [Q6-Q8] (25m control zone / seawall)	6	01-Aug-13	07-Aug-13	49	P-TP05 - 6D/W w/ holiday																																																																	
A31060		Zone B - dredging [P6-P8] (seawall)	12	08-Aug-13	21-Aug-13	49	P-TP05 - 6D/W w/ holiday																																																																	
A31080		Zone B - Final Hydrographic Survey (seawall)	7	22-Aug-13	29-Aug-13	52	P-TP05 - 6D/W w/ holiday																																																																	
A32160		Zone B - dredging [Q2-Q5] (25m control zone)	10	07-Sep-13	18-Sep-13	35	P-TP05 - 6D/W w/ holiday																																																																	
Dredging - Zone A2																																																																								
A30260		Zone A2 - dredging [L6-L8, M6-M8] (seawall)	12	19-Sep-13	04-Oct-13	35	P-TP05 - 6D/W w/ holiday																																																																	
Dredging - Zone A1																																																																								
A30360		Zone A1 - dredging [J4-J7, K5-K7] (seawall)	18	08-Jul-13	27-Jul-13	52	P-TP05 - 6D/W w/ holiday																																																																	
A30380		Zone A1 - final hydrographic survey (seawall)	7	29-Jul-13	05-Aug-13	158	P-TP05 - 6D/W w/ holiday																																																																	
Seawall Construction																																																																								
Seawall Construction - Zone C																																																																								
A31640		Zone C - temp. seawall - fill rubble mound to -4.0mPD	20	30-Aug-13	23-Sep-13	0	P-TP05 - 6D/W w/ holiday																																																																	
A31680		Zone C - C4 unit - Grade 75 rockfill along C4 unit	20	24-Sep-13	18-Oct-13	0	P-TP05 - 6D/W w/ holiday																																																																	
Seawall Construction - Zone B																																																																								
A31120		Zone B - seawall - fill rubble mound	20	30-Aug-13	23-Sep-13	52	P-TP05 - 6D/W w/ holiday																																																																	
A31180		Zone B - C4 unit - Grade 75 rockfill along C4 unit	20	24-Sep-13	18-Oct-13	54	P-TP05 - 6D/W w/ holiday																																																																	
Works for Section Completion																																																																								
Construction																																																																								
Box Culvert La, L1 & FRP-L Construction																																																																								
Box Culvert L - Design, Submission and Approval																																																																								
A13160		Culvert L - Lung King Street - TMLG meeting and roadwork advice for trial pit construction	60	21-Apr-13	19-Jun-13	2	P-TP05 - 7D/W w/o holiday																																																																	
A13180		Culvert L - Lung King Street - form and inspect trial pit	7	20-Jun-13	27-Jun-13	2	P-TP05 - 6D/W w/ holiday																																																																	
A13200		Culvert L - Lung King Street - TTA - prepare and submit to Eng	30	28-Jun-13	27-Jul-13	2	P-TP05 - 7D/W w/o holiday																																																																	
A13220		Culvert L - Lung King Street - TTA - TMLG and apply road work advice	90	28-Jul-13	25-Oct-13	2	P-TP05 - 7D/W w/o holiday																																																																	
A13240		Culvert L - Lung King Street - Method statement - prepare and submit to ICE	60	31-May-13	29-Jul-13	0	P-TP05 - 7D/W w/o holiday																																																																	
A13260		Culvert L - Lung King Street - Method statement - ICE check and issue check cert	14	30-Jul-13	12-Aug-13	14	P-TP05 - 7D/W w/o holiday																																																																	
A13280		Culvert L - Lung King Street - Method statement - Eng comment and approve	28	30-Jul-13	26-Aug-13	0	P-TP05 - 7D/W w/o holiday																																																																	
A13300		Culvert L - Lung King Street - temp work design - prepare and submit to ICE	60	28-Jun-13	26-Aug-13	10	P-TP05 - 7D/W w/o holiday																																																																	
A13320		Culvert L - Lung King Street - temp work design - ICE check and issue check cert	14	27-Aug-13	09-Sep-13	48	P-TP05 - 7D/W w/o holiday																																																																	
A13340		Culvert L - Lung King Street - temp work design - Eng comment and approve	52	27-Aug-13	17-Oct-13	10	P-TP05 - 7D/W w/o holiday																																																																	
Sec VI A - Box Culvert La bay 1-3 and Roadwork																																																																								
A32920		Sec VI A - Area 1 - relocation of kiosks	40	27-Aug-13	15-Oct-13	0	P-TP05 - 6D/W w/ holiday																																																																	
Section I - Interim Landing Steps and EVA																																																																								
Seawall Demolition																																																																								
A23700		Sec I - ILS - open cut behind existing seawall to 0.0mPD	10	24-May-13	04-Jun-13	0	P-TP05 - 6D/W w/ holiday																																																																	
A23720		Sec I - ILS - slope protection	90	17-Jun-13 A	08-Jul-13	0	P-TP05 - 6D/W w/ holiday																																																																	
A23740		Sec I - ILS - remove L-wall, and concrete block	11	28-Jun-13	11-Jul-13	0	P-TP05 - 6D/W w/ holiday																																																																	
Precast Concrete Element Construction																																																																								

